

July 1-03-

1561.7

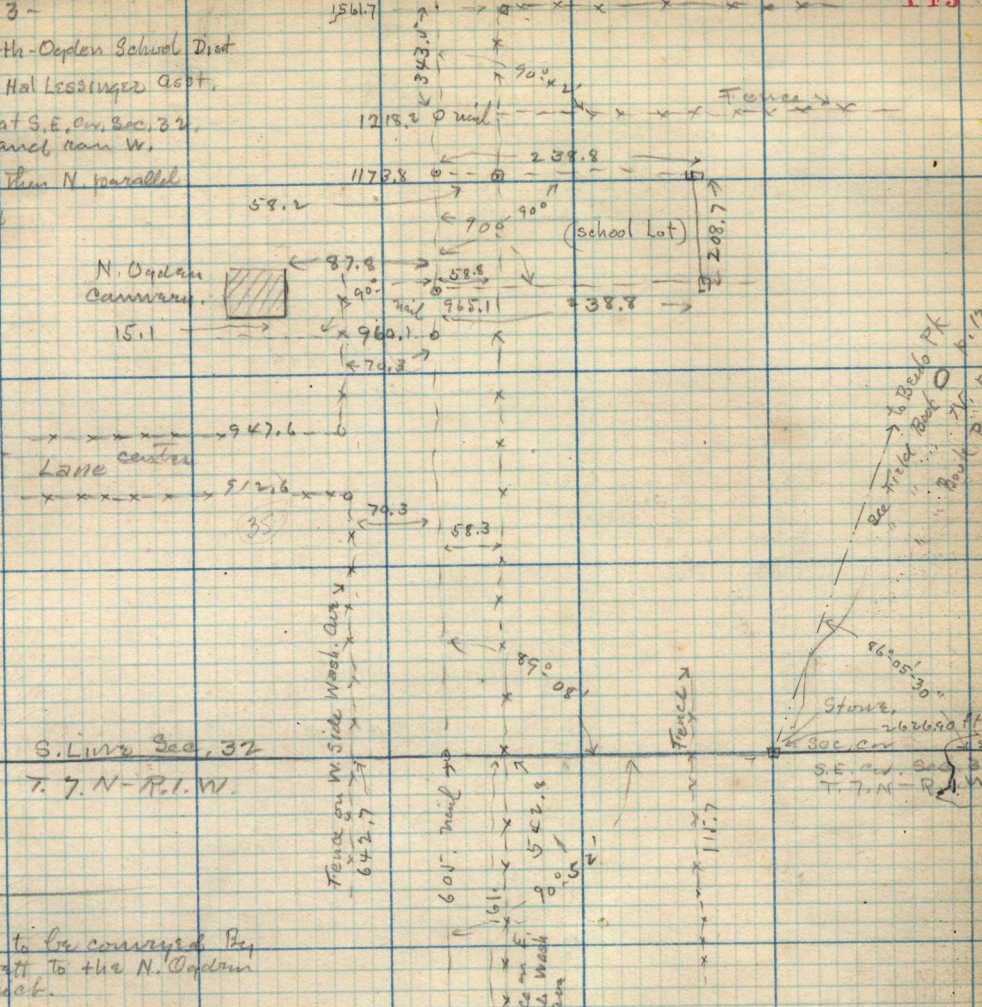
Survey for North-Oxford School Dist.

Self. H. Shaw & Hal Lessinger Asst.

Beg. at stone at S.E. cor. Sec. 32, T. 7. N. - R. 1. W. and run W.

to Washington & then N. parallel

to cent. said stone



Description to be conveyed by  
Marion Barrett to the N. Oxford  
School district.

Pt. S.E. 1/4 Sec. 32, T. 7. N. - R. 1. W.  
Beg. at a point 8.50 chs. W. and  
14.67 chs. N. from S.E. cor. of said 1/4 sec.  
Running thence N 3.16 chs - thence E. at  
right angles to Washington Cr. 3.16 chs  
thence S 3.16 chs - thence W 3.16 chs  
to Cr. 1/4.

Fence bet Marion Barrett &  
J. Woodfield

G. W. Culver & wife to J. A. Montgomery,  
Pt. S.E. 1/4 Sec. 32 - T. 7. N. - R. 1. W.,  
Beg. 8.50 chs. W. of S.E. cor. said 1/4 sec. and 19.30 chs  
N. by set cor. Thence N 1. ch. - W. 10. chs, S 1. ch. E  
10. chs. to Cr.

See Book 30 - 579  
for record of Marion  
Barrett's deed.

Beg. 8.50 chs. W. and 5.15 chs. W.  
of S.E. Cor. Sec. 32, T. 7. N. - R. 1. W.  
Thence N. 18.66 ch. - E  
20.73 ch. - S 8.80 ch. to Cr. S.W.  
along Cr. to Cr. 32.47 ch.